

FOR SALE EX-HIRE Equipment

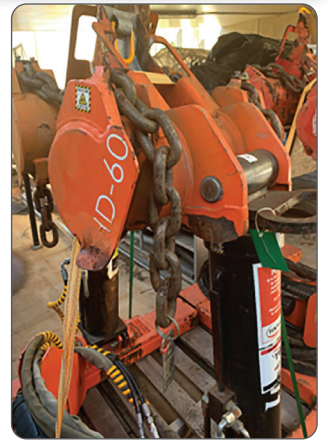
PP-60-XHD-H - Pole Puller - 56T



#02



#03



Contact TEN Hire for more images



Specifications	
Performance	Pull 600kN at 2,250 psi max. 125,000 (155 bar)
Maximum Pole Size	700mm Diameter / 2230mm Circumference
Cylinder	Stroke 600mm, Bore 150mm, Rod 125mm
Head	Chain (2) 3/4" Grade 100
Footprint	Exterior 1168 x 1168mm / Interior 711 x 711 mm
Height	Retracted 1500mm / Extended 2100mm
Weight	680kg

Item No.	Year	Description	Serial No.
#02	2014	Linewise Pole Puller - 56T	1312-61375-02
#03	2014	Linewise Pole Puller - 56T	1312-61375-03

Price on application - Contact Lindsay Taylor - 0400 968 238

AKTM5-5-1.5T - Equipotential Earth Mats 1.5m x 1.5m



Images for reference only, as available mats show evidence of use



KRI-TECH
PRODUCTS LTD



Part No.	QTY	Size (m)	Colour	Description
AKTM5-5-1.5T	22	1.5 x 1.5	Orange	Earth, mat, equipotential, 1.5m lead term to Screwdriver clamp

Equipotential Earth Mats - Suit stringing machine set-up



Part No.	QTY	Suit Tesmec	Colour	Description
TEN-EM-AFB506	1	ABF506	Orange	Earth Mat, Set of 2, With cutout for machine 25mm & 6mm braided Cu on orange PVC
TEN-EM-AFS411 /404	1	AFS411/404	Orange	

Images for reference only, as available mats show evidence of use

Price on application - Contact Lindsay Taylor - 0400 968 238